



SENSORY FRIENDLY

PRE-PERFORMANCE GUIDE



WHAT IS A SENSORY-FRIENDLY PERFORMANCE?

Sensory-friendly performances are for children and adults with sensory sensitivities, or for anyone who may benefit from being in a more relaxed theater environment. Oklahoma City Ballet's sensory-friendly performances will be offered at a special discounted price.

ACCOMMODATIONS FOR THESE PERFORMANCES INCLUDE THE FOLLOWING:

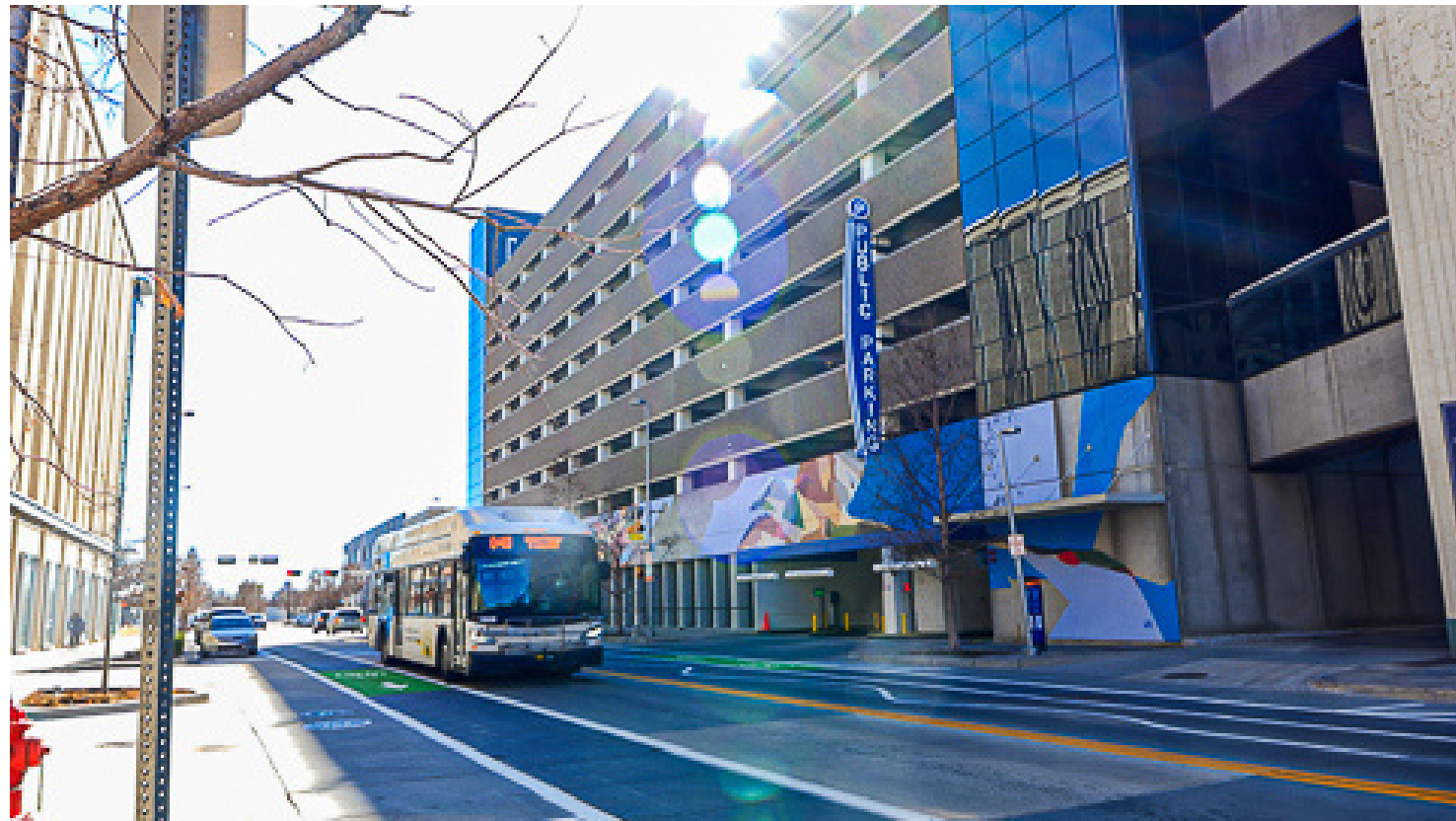
- Lower sound levels throughout the performance
- A reduction of strobe lighting and lighting focused on the audience
- House lights will remain on (at a low level) in the theatre auditorium during the performance
- No live orchestra
- No pyrotechnics

RELAXED THEATER RULES:

- Guests are free to talk, leave their seats, and move freely during the performance
- We will offer a designated safe/quiet area within the lobby with fidgets and earplugs available
- Allowed use of iPads and other electronics for therapeutic uses

PARKING

We will find a parking spot either on the street, in a parking garage, or a parking lot. I will then walk from the parking spot to the front of the theater, up the steps, and to the doors.



SHERIDAN-WALKER GARAGE

ARTS DISTRICT GARAGE



Street-level parking spaces are available along Couch and Colcord Drives, at mostly no cost for events. Parking is also available in private pay lots surrounding the Civic Center. In most cases, private pay lots only accept cash. Parking is also available at the Arts District Garage and Sheridan-Walker Garages, which are just a short walk from the Civic Center.



BOX OFFICE

I will need a ticket to attend the performance.

I might already have my ticket before I come to the theater, or I might need to pick it up at the Box Office.

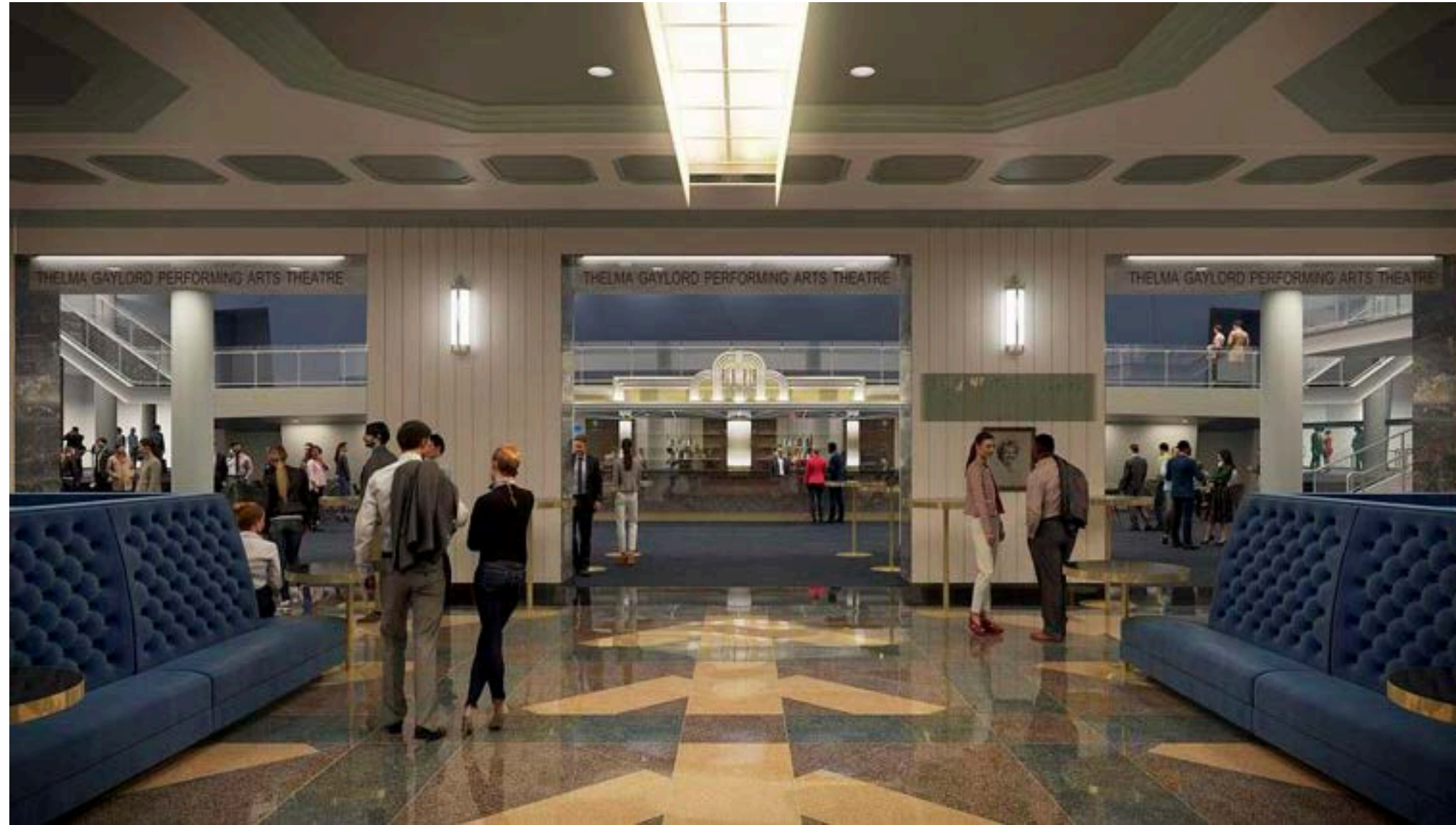
The Box Office is where I can get my ticket if I don't have it yet, and there will be someone there to help me.

If I lost my ticket, or forgot it at home, I can ask someone at the Box Office to help me get a new one.

When I have my ticket ready to go, I will enter the lobby.



METAL DETECTOR



ENTRANCE LOBBY

I will enter the entrance lobby through the front doors of the Civic Center.

There are stanchions in the lobby that guide us to a metal detector.

The metal detector may make noise and the Civic Center staff will be there to help guide me through.

There will be a staff member present to scan my ticket once I pass through the metal detector.



STANCHION



CONCESSION AREA

Before the performance or during intermission, I can visit the concession area.

This is where I can get snacks and drinks. If I need help deciding what to get, I can ask the person behind the counter or the people I'm with.

I can bring a drink back to my seat to enjoy during the performance, but I will need to finish my snacks before going inside the theater.

BATHROOM

It's a good idea to go to the bathroom before the performance starts, but if I need to go during the show, that's okay too.

I can let the people I'm with know if I need to use the bathroom, and they will help me find the way.

I can leave my seat and return when I'm ready.





ENTERING THE THEATER

Now it's time to go into the theater.

I will give my ticket to the usher, who might scan it again with a machine that makes a beeping sound.

After that, the usher will help me find my seat.

I can bring anything that makes me feel comfortable, like an iPad with headphones, so I can enjoy the performance.

IN THE THEATER

Every seat in the theater is assigned with a letter and number.

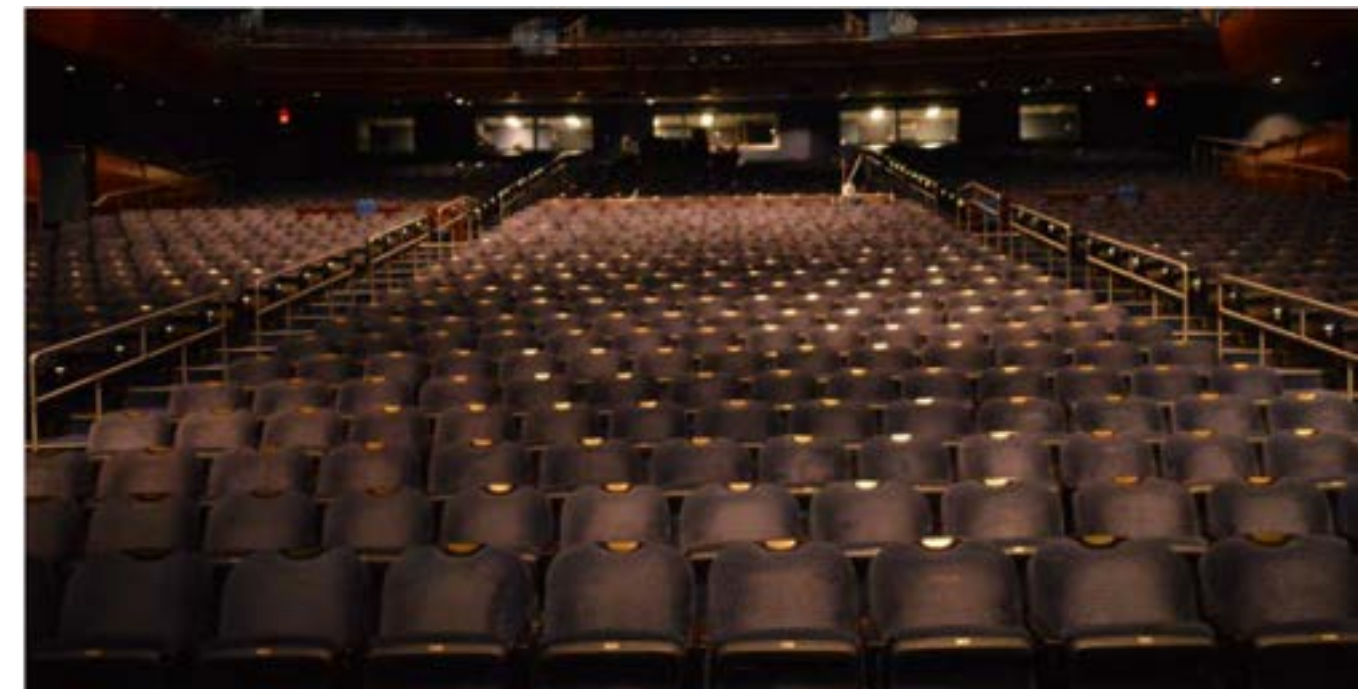
My ticket will have my seat letter and number on it.

I will match my ticket to the seat number.

I will be sitting with the rest of my group. But I may not know one person sitting next to me.

Sometimes a person might walk in front of me during the performance.

While I am allowed to bring electronic devices with me, I am not allowed to take pictures or videos during the performance.





MAIN LOBBY

If I need a break from the show I can go to the main lobby.

I will tell the people I am with if I need some quiet time.

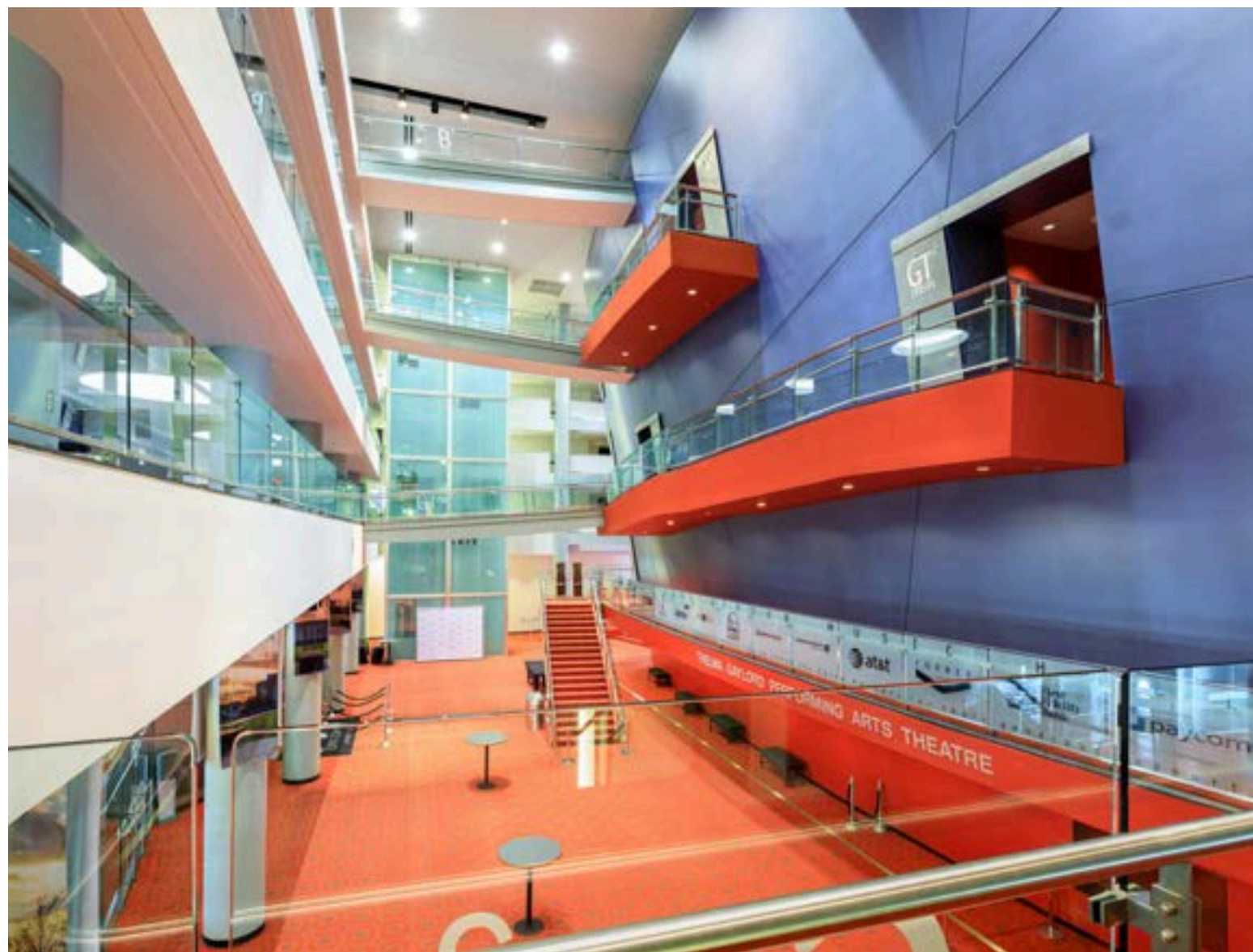
There is a quiet space in the lobby where I can sit, or I can walk around if I feel like it.

There will be an intermission during the performance.

People from the audience will go into the lobby to walk around during intermission.

The lobby can be noisy during the intermission with lots of people walking around.

After the intermission is over, everyone will go back to their seats to finish watching the performance.



END OF THE PERFORMANCE

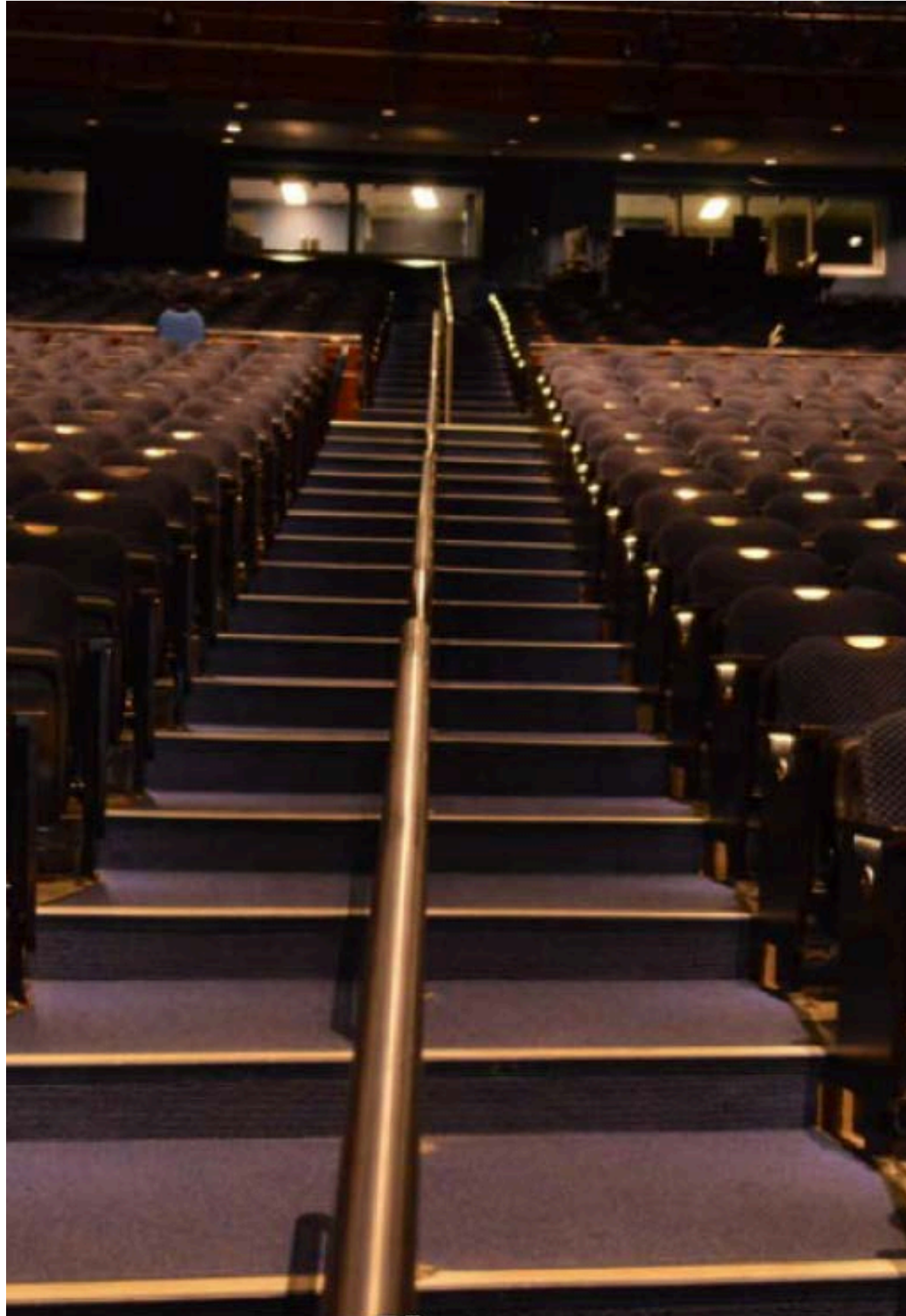
The show ends when the dancers bow.

Everyone will clap for the dancers and I can too.

If the clapping is too loud, I can cover my ears or use headphones.

The clapping only happens for a short time.





LEAVING THE THEATER

I will walk either up or down the stairs to leave the theater.

Everyone will be leaving at the same time.

The stairs may get crowded with people and it may be noisy.

Then we will leave the theater, go out the lobby doors, and find the car to go home.